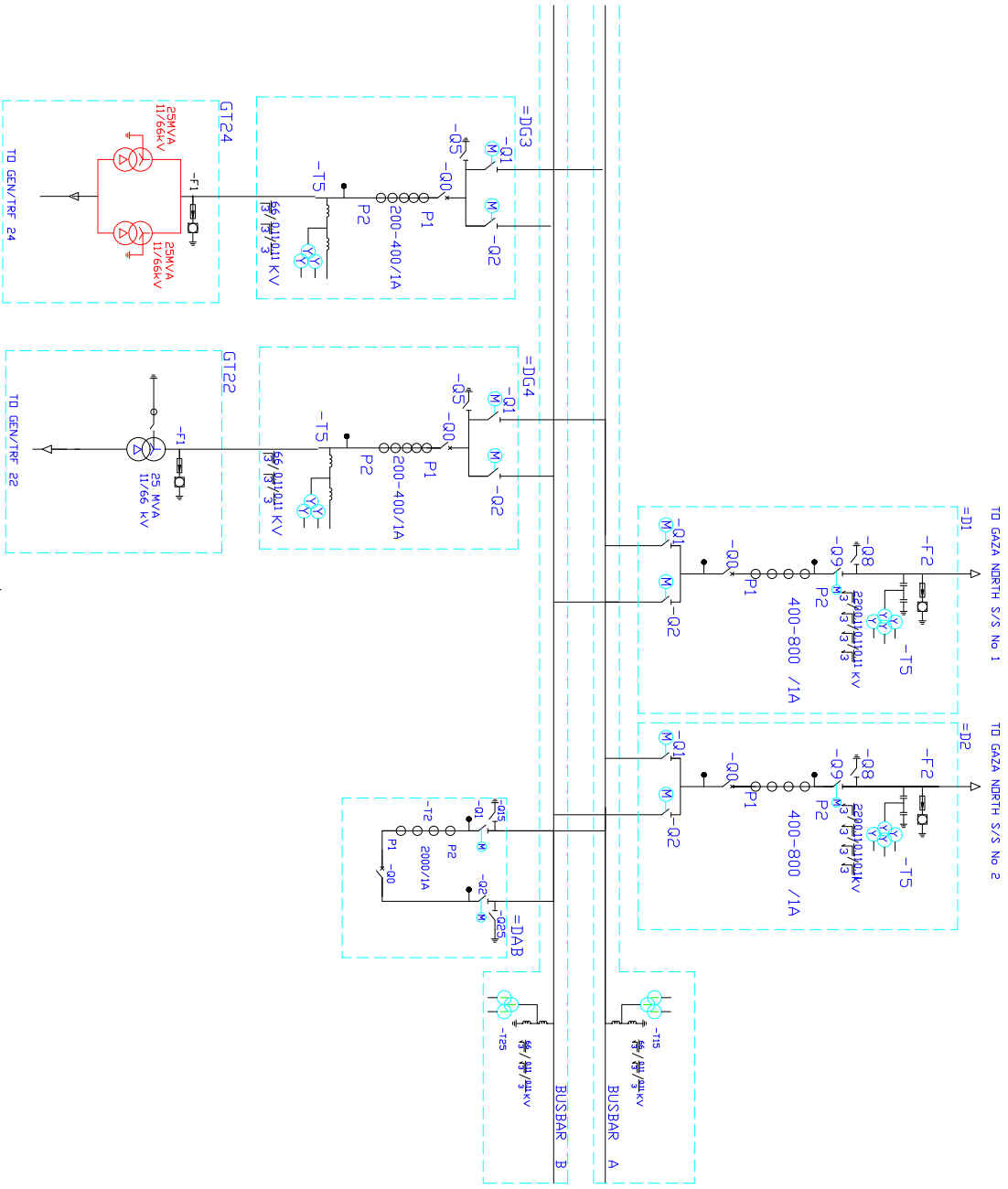


REFERENCE: ABB SWITCHGEAR DOCUMENT NO. 1WAU 626851-A



STEP UP TRANSFORMERS
POWER PLANT 140 MW

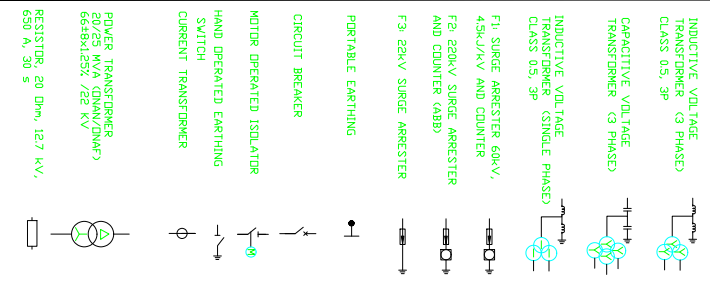
- INDUCTIVE VOLTAGE TRANSFORMER (3 PHASE) CLASS 0.5, 3P
- CAPACITIVE VOLTAGE TRANSFORMER (3 PHASE)
- INDUCTIVE VOLTAGE TRANSFORMER (SINGLE PHASE) CLASS 0.5, 3P
- F1 SURGE ARRESTER 60kV, 4.5kA/kV AND COUNTER
- F2 20kV SURGE ARRESTER AND COUNTER (ABB)
- F3 20kV SURGE ARRESTER
- PORTABLE EARTHING
- CIRCUIT BREAKER
- MOTOR OPERATED ISOLATOR
- HAND OPERATED EARTHING SWITCH
- CURRENT TRANSFORMER
- POWER TRANSFORMER 20/25 MVA (DINA/DIMAF) 66±8kV/125% /22 kV
- RESISTOR, 20 Ohm, 12.7 kV, 600 A, 30 S

PROJECT: Upgrading works of Gaza Power Plant Stage (II)

TITLE: SINGLE LINE DIAGRAM OPTION2

SINGLE LINE DIAGRAM GAZA WEST SUBSTATION(II)

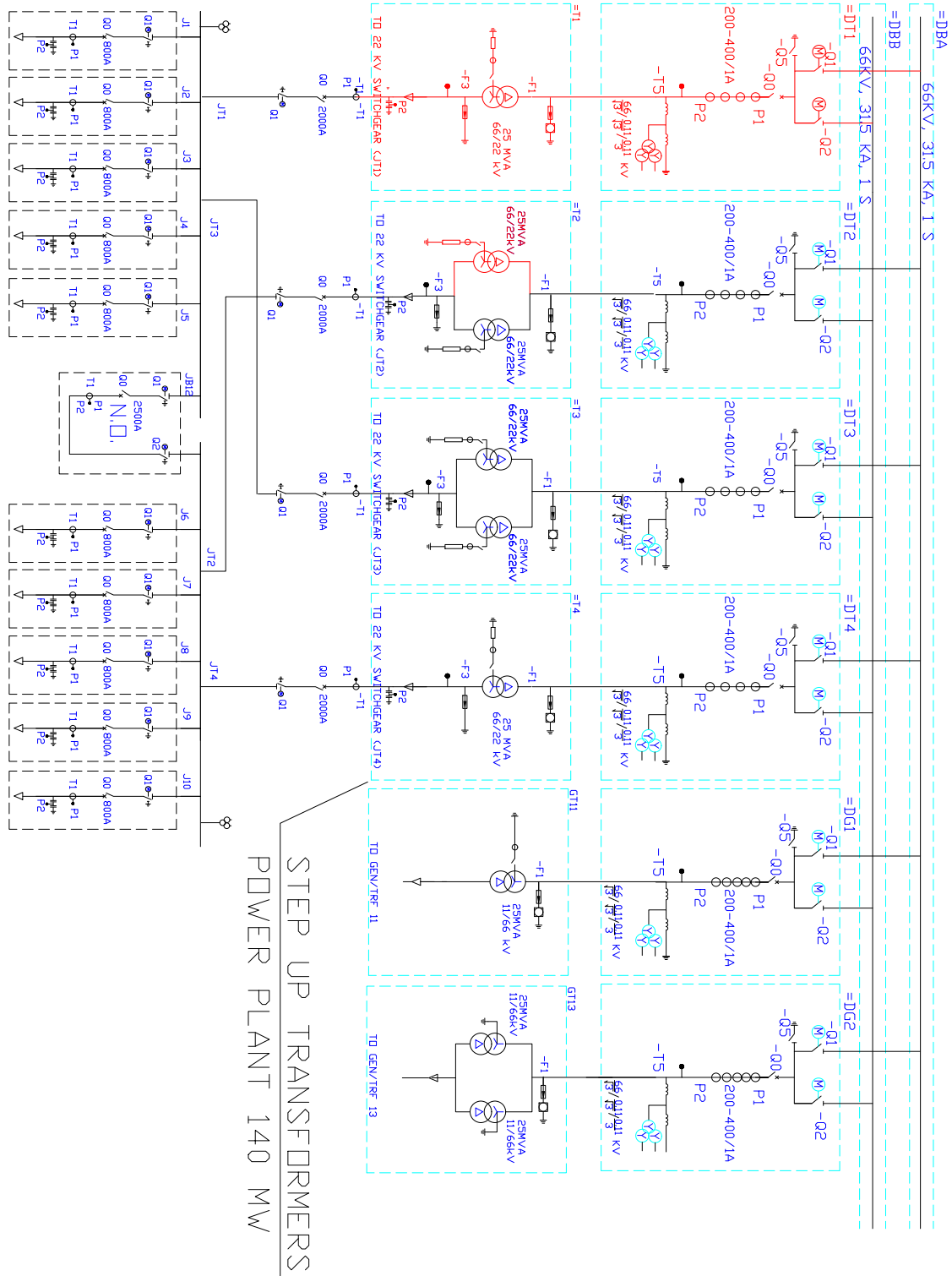
REFERENCE: ABB SWITCHGEAR DOCUMENT NO. 1WAU 626851-A



PROJECT: Upgrading works of Gaza Power Plant Stage (II)

TITLE: SINGLE LINE DIAGRAM OPTION 2

SINGLE LINE DIAGRAM GAZA WEST SUBSTATION (I)



**STEP UP TRANSFORMERS
POWER PLANT 140 MW**