

LEGEND

#	SYMBOL	DESCRIPTION
1		ELECTRICAL PANEL BOARD
2		LOW VOLTAGE BOX
3		ELECTRICAL MANHOLE
4		TIMING STEP RELAY
5		CEILING MOUNTED LIGHT
6		WALL MOUNTED LIGHT
7		CEILING MOUNTED LIGHT \WATERPROOF
8		WALL MOUNTED LIGHT \WATERPROOF
9		FLUORESCENT (DOUBLE)
10		FLUORESCENT \WATERPROOF (DOUBLE)
11		FLUORESCENT (SINGLE)
12		SINGLE SWITCH
13		SINGLE SWITCH \WATERPROOF
14		DOUBLE SWITCH
15		DOUBLE SWITCH \WATERPROOF
16		TWO WAY SWITCH
17		TWO WAY SWITCH \WATERPROOF
18		PUSH BUTTON
19		SINGLE POWER SOCKET
20		DITTO BUT \WATERPROOF
21		DOUBLE POWER SOCKET
22		DITTO \WATERPROOF
23		TELEPHONE OUTLET
24		INTERCOME OUTLET
25		TELEVISION OUTLET
26		EMERGENCY LIGHT
27		EXIT LIGHT
28		EXTERNAL LIGHT
29		SINGLE PHASE FUSE
30		THREE PHASE FUSE
31		INTERMEDATE SWITCH
32		SINGLE PHASE CIRCUIT-BREAKER
33		THREE PHASE CIRCUIT-BREAKER
34		THREE PHASE EARTH LEAKAGE RELAY
35		SINGLE PHASE EARTH LEAKAGE RELAY
36		ON/OFF SWITCH
37		ON/OFF SWITCH WITH INDICATION LAMP
38		LIGHTING POINTS & SWITCHES REFERENCES
39		CURRENT TRANSFORMER, 20:5
40		AMMETER SELECTOR SWITCH
41		VOLTMETER SELECTOR SWITCH
42		AMMETER
46		VOLTMETER
47		BELL
48		CONDUIT IN CEILING OR FLOOR
49		RUNNING TO PANEL BOARD
50		EARTH COPPER BUSBAR

**CLIENT**  
**UNDP**  
 UNITED NATIONS DEVELOPMENT PROGRAMME  
 INTERNATIONAL LABOUR ORGANIZATION

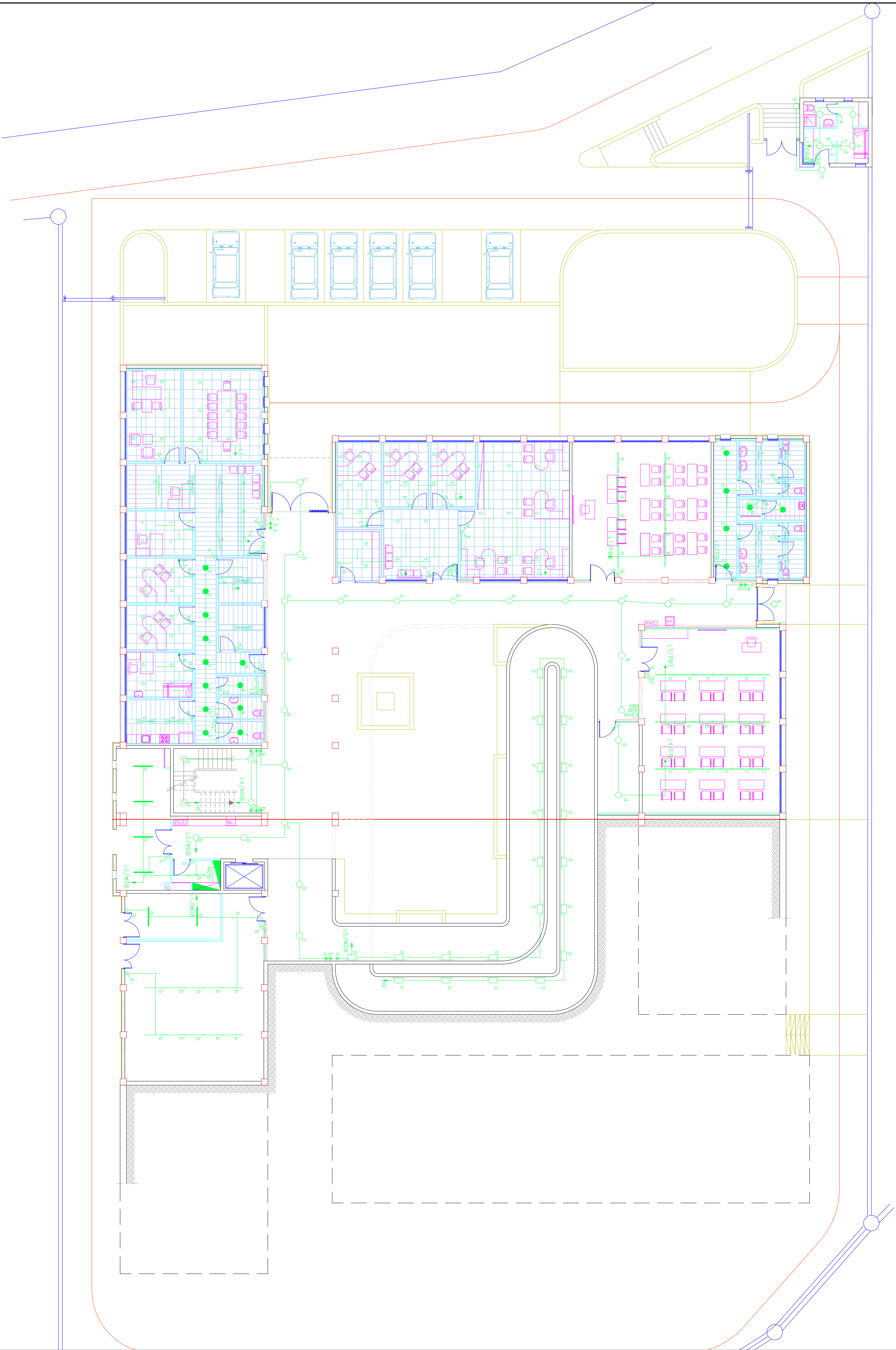
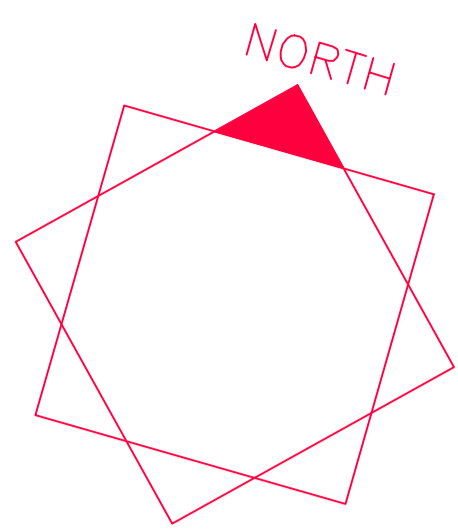
**CONSULTANT**  
**AR**  
 ATIELER D'ARCHITECTURE ET D'URBANISME  
 Techniciens - 49,19 -  
 BORDJ - ALGERIE - P.O. BOX 586 - TEL : 2941255 - FAX : 2941333

**PROJECT**  
 SHEIKHA FATIMA  
 VOCATIONAL REHABILITATION  
 TRAINING CENTER BEIT UMMAR

**TITLE**  
 ELECTRICAL LEGEND  
 & EARTHING SYSTEM

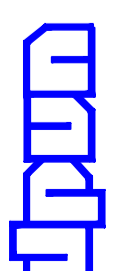
ISSUED FOR TENDERING	STATUS
CHECKED	APPROVAL
DATE 30/09/2002	SCALE 1/100
DWG. NO.	REV.
E 01	

LINE SCALE IS REDUCED TO 0:40



THE SCALE IS REDUCED TO 0.40

REV. NO.	DATE	DESCRIPTION	APPR.

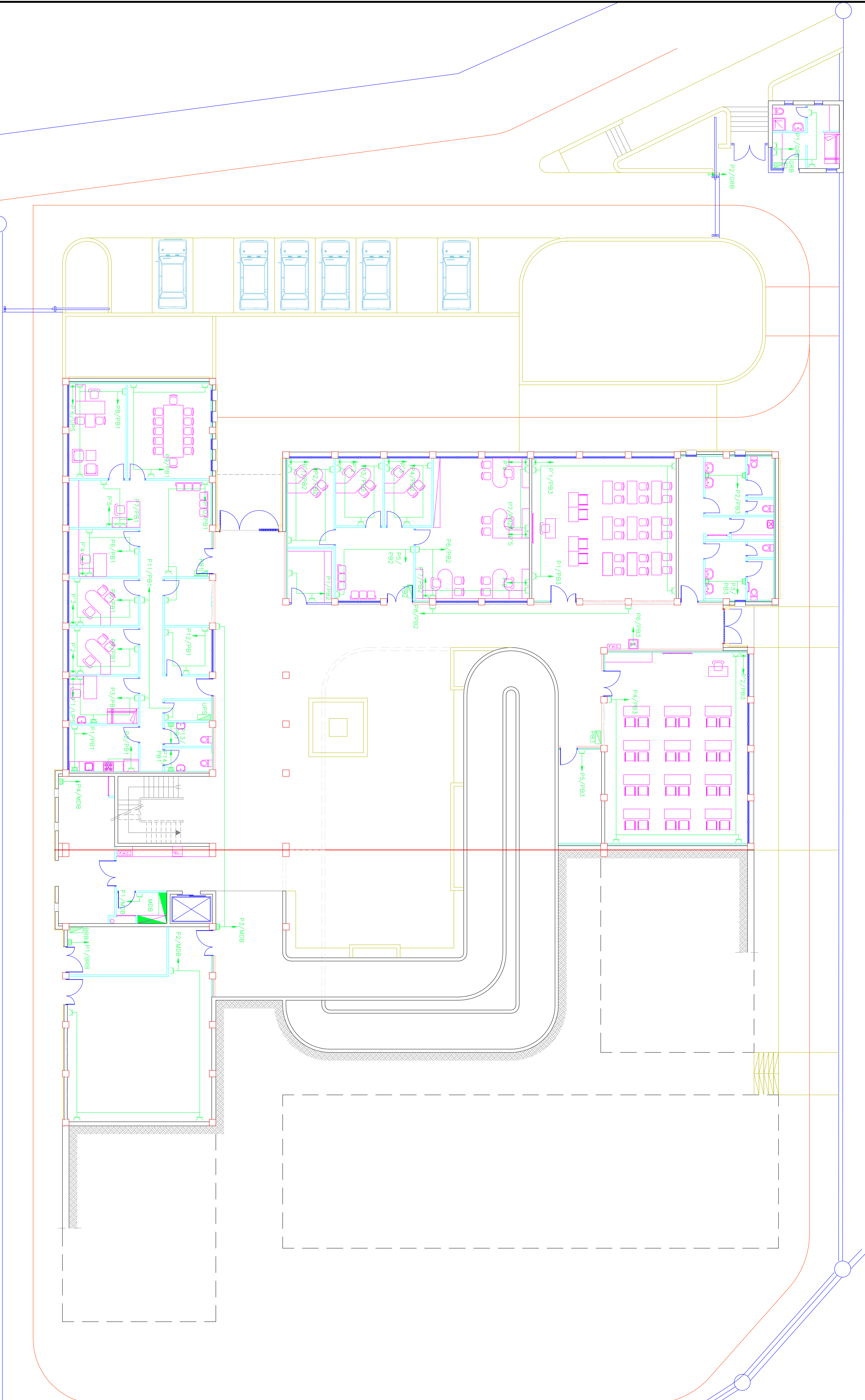
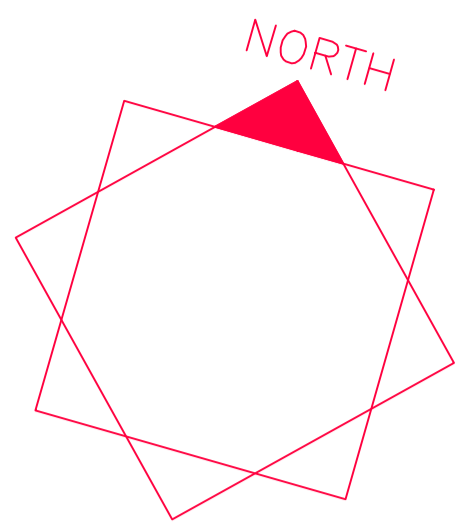
**CLIENT**  
  
 UNITED NATIONS DEVELOPMENT PROGRAMME  
 INTERNATIONAL LABOUR ORGANIZATION

**CONSULTANT**  
  
 ATELIER D'ARCHITECTURE ET D'URBANISME  
 40, rue de la République - 11500  
 BEIRUTH - TEL : 2241225 - FAX : 2241333

**PROJECT**  
 SHEIKHA FATIMA  
 VOCATIONAL REHABILITATION  
 TRAINING CENTER BEIT UMAR

**TITLE**  
 GROUND FLOOR PLAN  
 LIGHTING LAYOUT

DRAWN	STATUS
	FOR TENDERING
CHECKED	APPROVAL
DATE	SCALE
30/09/2002	1/100
DWG. NO.	REV.
E 02	



THE SCALE IS REDUCED TO 0:40

REV. NO.	DATE	DESCRIPTION	APPR.

CLIENT  
**UNDP**  
 UNITED NATIONS DEVELOPMENT PROGRAMME  
 INTERNATIONAL LABOUR ORGANIZATION

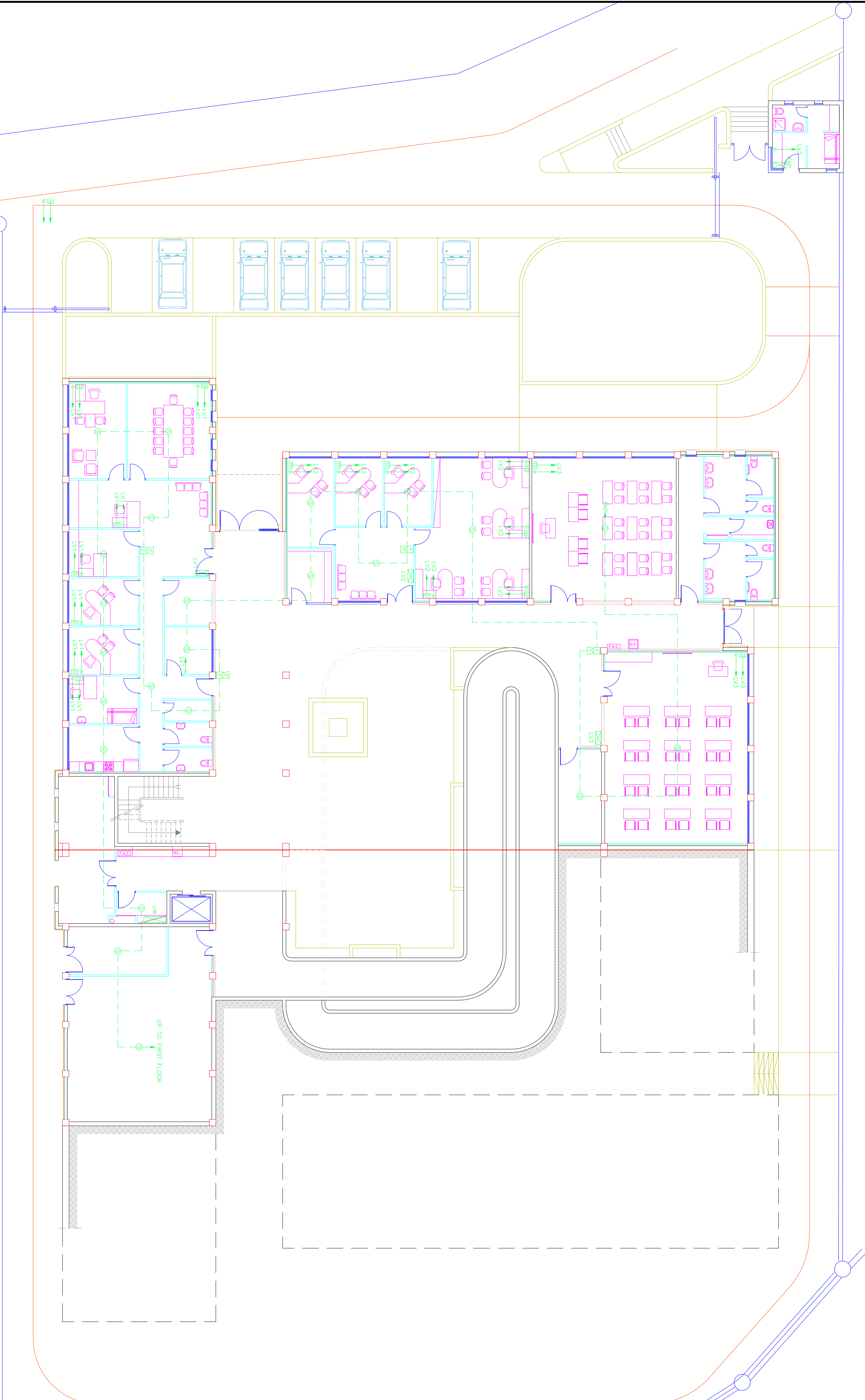
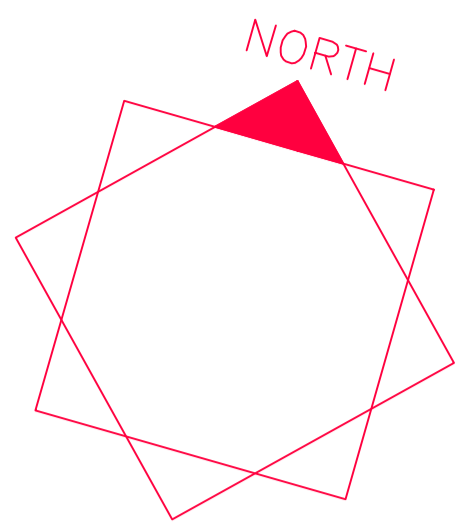
CONSULTANT  
**A**  
 STELLER D'ARCHITECTURE ET D'URBANISME  
 architectes - designers - CONSULTANTS  
 BETHLEHEM P.O. BOX 356 TEL : 2941255 - FAX : 2941333

PROJECT  
 SHEIKHA FATIMA  
 VOCATIONAL REHABILITATION  
 TRAINING CENTER BEIT UMMAR

TITLE  
 GROUND FLOOR PLAN  
 POWER LAYOUT

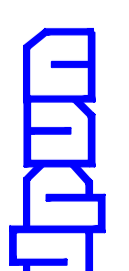
DRAWN	STATUS
CHECKED	FOR TENDERING
DATE	APPROVAL
DWG. NO.	SCALE
REV.	REV.

30/09/2002  
 1/100  
 E 03



THE SCALE IS REDUCED TO 0:40

REV. NO.	DATE	DESCRIPTION	APPR.

**CLIENT**  
  
 UNITED NATIONS DEVELOPMENT PROGRAMME  
 INTERNATIONAL LABOUR ORGANIZATION

**CONSULTANT**  
 STELLER D'ARCHITECTURE ET D'URBANISME  
 architectes - d.p.l.p.  
  
 ONOSIOS  
 BETHLEHEM P.O. BOX 358 TEL : 2941255 - Fax : 2941333

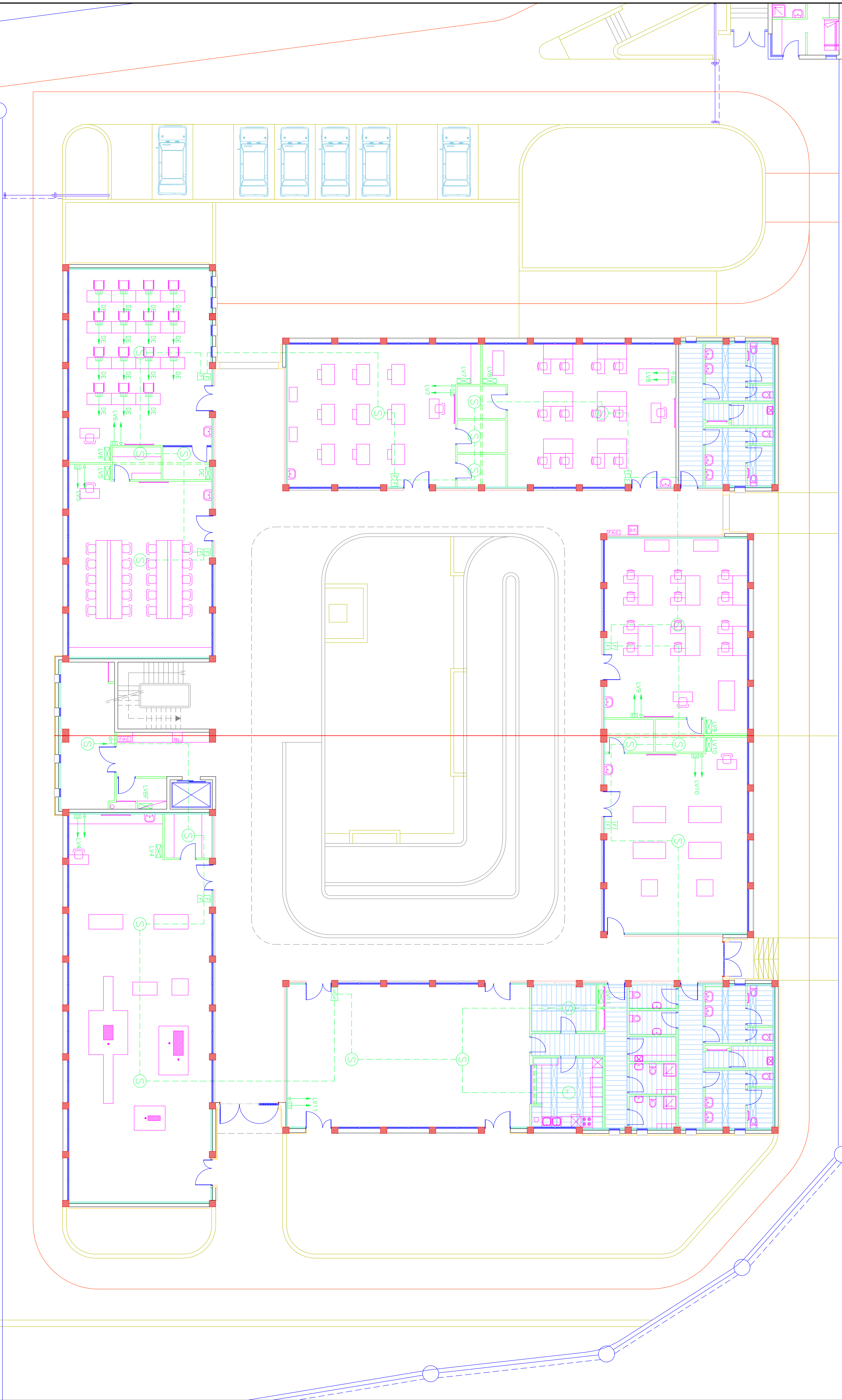
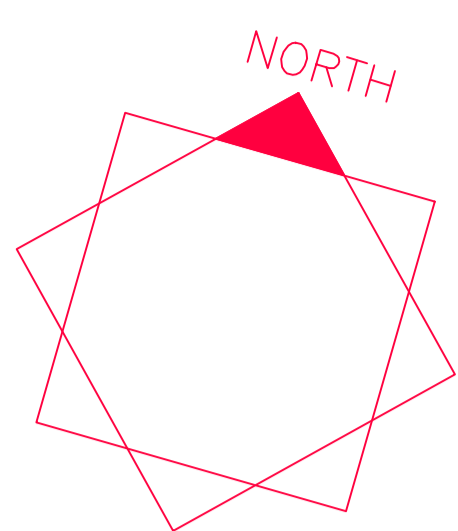
**PROJECT**  
 SHEIKHA FATIMA  
 VOCATIONAL REHABILITATION  
 TRAINING CENTER BEIT UMMAR

**TITLE**  
 GROUND FLOOR PLAN  
 LOW VOLTAGE LAYOUT

DRAWN	STATUS
	FOR TENDERING
CHECKED	APPROVAL
DATE	SCALE
30/09/2002	1/100
DWG. NO.	REV.
E 04	








THE SCALE IS REDUCED TO 0/40

REV. NO.	DATE	DESCRIPTION	APPR.

**CLIENT**  
  
UNITED NATIONS DEVELOPMENT PROGRAMME  
INTERNATIONAL LABOUR ORGANIZATION

**CONSULTANT**  
  
ATELIER D'ARCHITECTURE ET D'URBANISME  
Rue de la Loi - 42, 115  
1050 BRUXELLES - BELGIUM  
TEL : 32 (0) 2741 2325 - FAX : 32 (0) 2741 2333

**PROJECT**  
SHEIKHA FATIMA  
VOCATIONAL REHABILITATION  
TRAINING CENTER BEIT UMMAR

**TITLE**  
FIRST FLOOR PLAN  
LOW VOLTAGE LAYOUT

DRAWN	STATUS
	FOR TENDERING
CHECKED	APPROVAL
DATE	SCALE
DWG. NO.	REV.

30/09/2002  
1/100  
E 07



